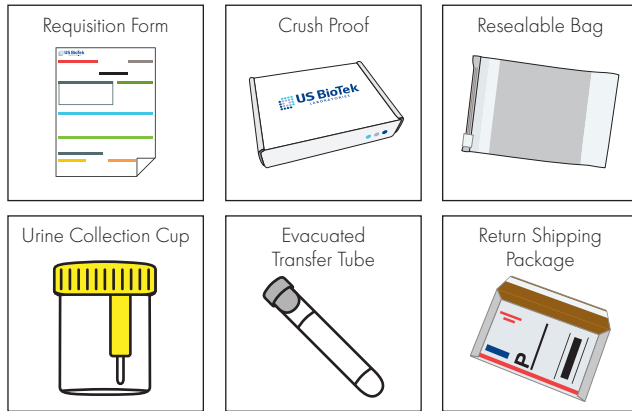
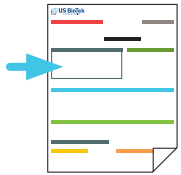


## Contents



### Requisition Form



Clearly print your Name, Date of Birth, Gender, and Collection Date. Also include the Physician's Name, Tests Requested, Billing Information, and Specimen Ship Date.

To avoid rejections, follow these points:

- Missing or incomplete test request information will delay processing and extend turn-around time.
- Nicknames or abbreviated names are not acceptable.
- Patient's name on the Test Requisition Form and Collection Strip must exactly match.
- Missing or incomplete information on the test requisition form will delay the processing time of your specimen.

## Prior to collecting the specimen

- Do not urinate for at least 1 hour prior to specimen collection.
- Female patients: Do not wipe or clean the vagina before urinating.
- Wash hand thoroughly.

**NOTE:** Caution do not to remove the safety label on the Urine Cup lid to protect against needle sticks from the sharp integrated transfer device, until ready to transfer.

## STI Sample Information

### Food, Inhalant

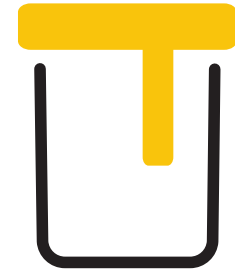
The lab must receive specimen within 4 days at ambient temperature from date of collection

US Biotech Laboratories is NOT a Medicare or Medicaid provider.

### Avoid Specimen Rejection

Label Serum Transfer Tube with Patient Full Name, Date of Birth AND Specimen Collection Date. A specimen tube missing this information will be rejected.

# URINE CUP COLLECTION & SHIPPING INSTRUCTIONS



**Read this document carefully before using the contents of this package.**

US BioTek Laboratories' Specimen Collection and Shipping Instructions are permitted for use under the guidance of a healthcare practitioner.



16020 Linden Ave North, Shoreline, WA 98133-5672, USA

P: 1.206.365.1256

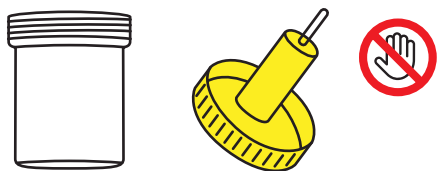
F: 1.206.363.8790

Toll Free: 1.877.318.8728

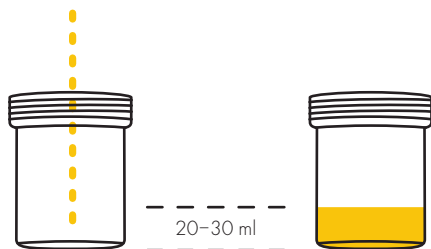
USBioTek.com



## Specimen Collection

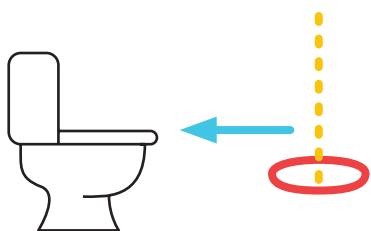


Remove the lid from the Urine Cup and place the lid threaded side up on the counter. Do not touch the inside of the lid.

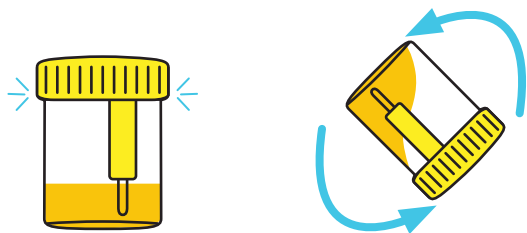


Perform a first catch (sample collected from initial urine stream). Collect between 20–30 ml. Check to see the urine volume.

**IMPORTANT:** Only fill the urine cup up 25% of the way, between the 20–30 ml mark only. Collections larger than 30 ml may result in specimen dilution which may reduce test sensitivity or result in sample rejection. The 30mL mark is at the bottom of the frosted label.

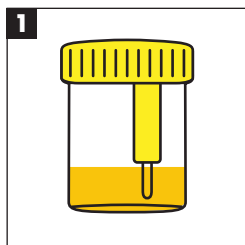


Empty the remaining volume of the bladder into the toilet.



Secure the urine cup lid tightly and mix the urine cup gently by inverting 5 times.

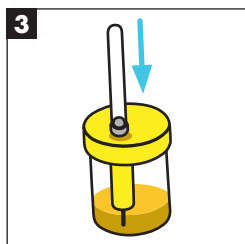
## Specimen Transfer



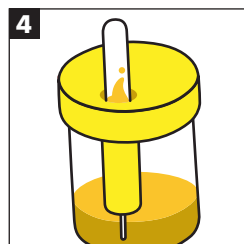
Place the cup upright on a flat surface.



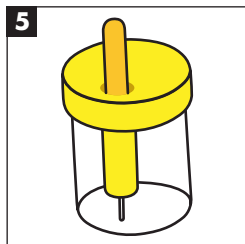
Peel off the safety label on cap to expose the integrated transfer device.



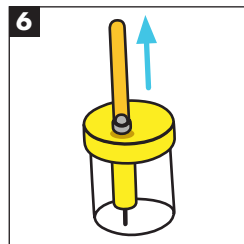
Insert the evacuation tube into the cavity on cap, stopper end down. Push the tube down over puncture point to pierce stopper.



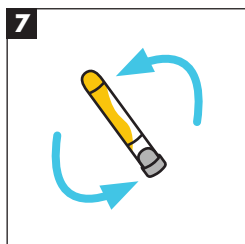
Urine will flow automatically into the evacuation tube.



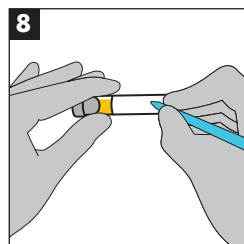
Hold the evacuation tube in position until the tube is done filling.



Remove the tube from the integrated transfer device.

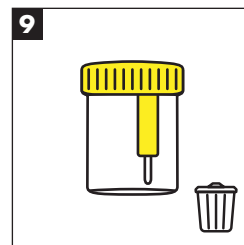


Invert the tube 8-10 times to mix the specimen.

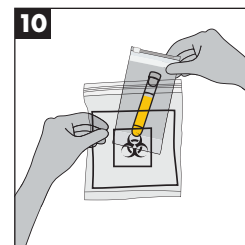


Fill out the label on the evacuation tube with the name, date of birth and collection date that exactly match the information on the test request form.

## Specimen Transfer Cont.



Dispose the urine cup.



Place the filled evacuated tube and test request form into the biohazard bag. Seal the bag and ship the specimen to the lab at ambient temperature.

## Shipping

### Shipping Within the US

Use the white first class prepaid envelope provided. Drop the envelope off at the US postal office or give to your mail carrier. The tracking number is located on the envelope for your convenience.

#### Attention

**Washington, Alaska, Hawaii, Puerto Rico, & US Virgin Islands**

Mail specimen via US Postal Service with the prepaid Priority Mail Envelope provided. The tracking number is located on the envelope for your convenience. A more immediate delivery is at the cost of the practitioner.

**Use the shipping supplies provided with the test kit to return your sample.**

### Shipping from Canada

Shipping Contents Include:

- 1 Large Clinical Pak
- 1 FedEx self-adhesive pouch with mailing label (attached to Clinical pak)
- 2 Waybills (prepacked in Fed-ex pouch)
- 1 commercial invoice (prepacked in Fed-ex pouch)

Place Crush proof Cardboard box inside FedEx Clinic Pak and seal.

**Do not remove the enclosed waybills and commercial invoice from inside the self-adhesive fed-ex pouch.**

Contact FedEx for pickup:  
1.800.463.3339

### Shipping Outside of US & Canada

Client is responsible for the shipping cost.