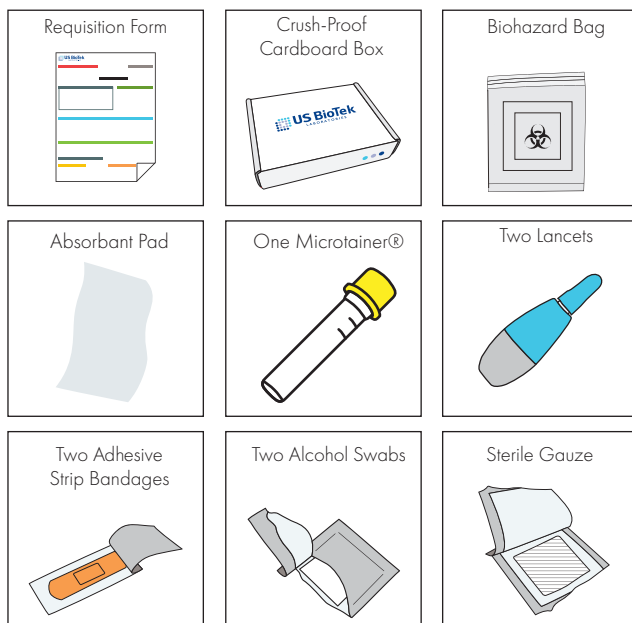


Contents



Shipping materials are also provided.

Diet & Medications

It is suggested that you maintain your usual dietary habits and consume a variety of foods when possible within a couple weeks prior to blood collection, unless advised otherwise by your healthcare practitioner.

Do not reintroduce allergens that may have potentially resulted in a previous adverse reaction and/or anaphylaxis, as secondary exposure may prove fatal.

Immunosuppressive drugs such as oral or intranasal corticosteroids (e.g. prednisone, beclomethasone, fluticasone, triamcinolone) and topical cortisone suspensions and creams, in addition to immunomodulating drugs, may affect test results for antibody assessment.

Warnings and Precautions

- Missing or incomplete information on the test requisition form will delay the processing time of your specimen.
- The materials provided in the kit are for one time use only. Do not reuse the lancet.
- Do not perform this test if you are taking blood thinning medications or if you have a blood clotting disorder unless authorized by your healthcare practitioner.
- The lancet is not suggested for use on children younger than one year old. Pediatric lancets and heelsticks are available upon request.
- Blood samples should not be collected from swollen or previously punctured sites, earlobes or fifth fingers. The fifth finger must not be punctured because the tissue-depth is insufficient to prevent bone injury.
- Avoid strong repetitive pressure ('milking') on the pricked finger. This may cause rejection of the specimen or inaccurate results.

Important

IgE Food or Inhalant Tests

The lab must receive specimen within 7 days at ambient temperature from date of collection.

US Biotek Laboratories is NOT a Medicare or Medicaid provider.

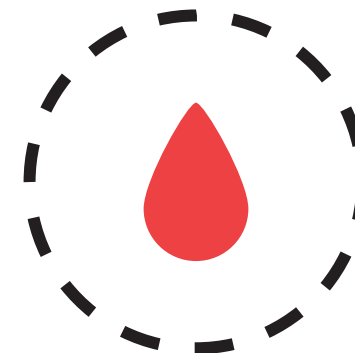
Avoid Specimen Rejection

Label Serum Transfer Tube with Patient Full Name, Date of Birth AND Specimen Collection Date. A specimen tube missing this information will be rejected.

"Milking" of skin puncture site may cause hemolysis and affect test result.

For IgE Food & Inhalant Panel, patient's zip code is required.

MICROTAINER® BLOOD COLLECTION & SHIPPING INSTRUCTIONS



Read this document carefully before using the contents of this package.



16020 Linden Ave North, Shoreline, WA 98133-5672, USA

P: 1.206.365.1256

F: 1.206.363.8790

Toll Free: 1.877.318.8728

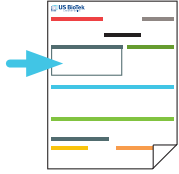
USBioTek.com



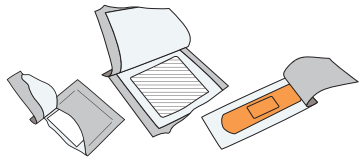
Preparation

Requisition Form

Missing or incomplete test request information will delay processing and extend turn-around time. Specimen may be safely shipped at ambient temperature. For tracking purposes, keep a copy of your tracking number.



Lay Out Collection Materials



Alcohol Swab/Gauze/Bandage

Tear open packages, leaving swab, gauze, and bandage inside until use.



Microtainer®

Blood collection device.



Lancets

2 lancets are provided.
Do not reuse.

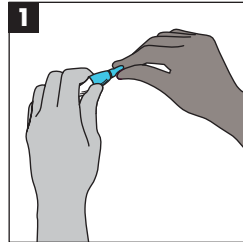
Microtainer® Collection Tips

See Step 7: Hold Microtainer Tube with collection hole in upward position. Avoid scraping skin surface to collect blood sample. Blood will freely flow to bottom of tube. **IMPORTANT: "Milking" of skin puncture site may cause hemolysis and affect test result accuracy.**

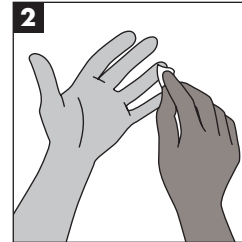


Wash hands for 30-60 seconds under warm water. Warming your hands before collection can increase blood flow to your fingers and make specimen collection easier.

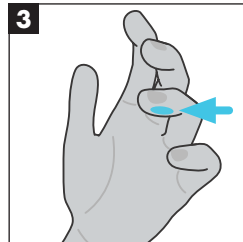
Specimen Collection Instructions



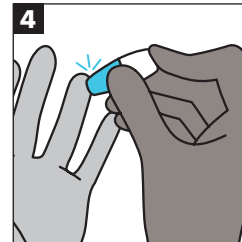
1 Twist off the blue tab to break seal on lancet. Do NOT touch or depress white tip.



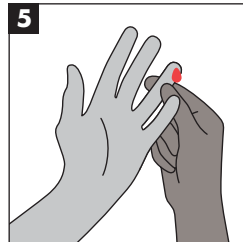
2 Use the provided alcohol pad to clean the tip of the finger (3rd finger or 4th finger).



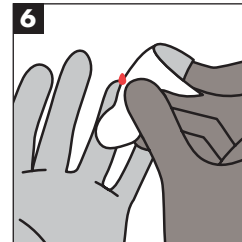
3 Place the tip of the lancet against the side of the fingertip. The side facing the 5th finger.



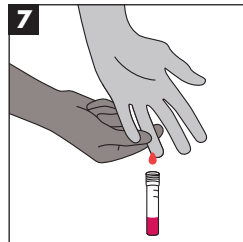
4 Press down firmly until an audible click is heard.



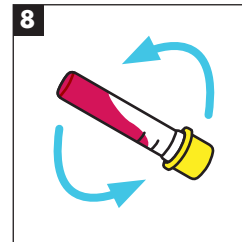
5 Gently press the pricked finger from below the puncture site to allow for a large drop of blood to form.



6 Wipe away the first drop of blood with the gauze.

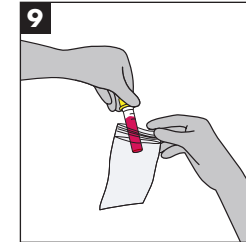


7 Keep the finger in a downward position and gently massage it to maintain blood flow. Fill Microtainer® to 600 microliters (mcl) level.

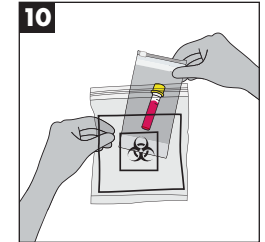


8 Cap the Microtainer® and gently invert it 10 times.

Specimen Collection Instructions Cont.



9 Place Microtainer into the Small Resealable Bag with the absorbant pad.



10 Place this Bag into the Provided Biohazard Bag. Then place all contents including requisition form into the Crush-Proof Cardboard Box.

Shipping

Use the shipping supplies provided to return your sample.

Shipping Within the US

Use the white first class prepaid envelope provided. Drop the envelope off at the US postal office or give to your mail carrier. The tracking number is located on the envelope for your convenience.

Attention

Washington, Alaska, Hawaii, Puerto Rico, & US Virgin Islands

Mail specimen via US Postal Service with the prepaid Priority Mail Envelope provided. The tracking number is located on the envelope for your convenience. A more immediate delivery is at the cost of the practitioner.

Shipping from Canada

Shipping Contents Include:

- 1 Large Clinical Pak
- 1 FedEx self-adhesive pouch with mailing label (attached to Clinical pak)
- 2 Waybills (prepacked in Fed-ex pouch)
- 1 commercial invoice (prepacked in Fed-ex pouch)

Place Crush proof Cardboard box inside FedEx Clinic Pak and seal.

Do not remove the enclosed waybills and commercial invoice from inside the self-adhesive fed-ex pouch.

Contact FedEx for pickup:
1.800.463.3339

Shipping Outside of US & Canada

Client is responsible for the shipping cost.



Once specimen collection is completed, apply the provided bandage to the puncture site.