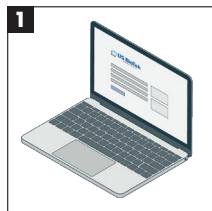
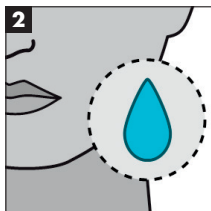


SALIVA COLLECTION & SHIPPING INSTRUCTIONS

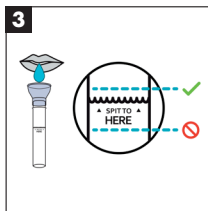
Important: Please do not eat, drink, smoke, chew tobacco, chew gum, brush teeth, or use mouthwash for 30 minutes before collecting your sample. This may invalidate results.



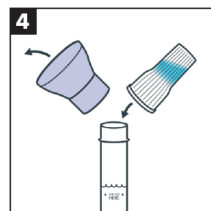
1 Go to usbiotek.com/login to register your test and create an account.



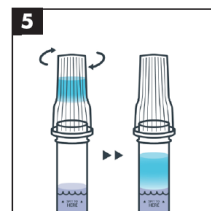
2 Pool saliva in mouth before filling the collection tube with liquid saliva (not bubbles). It typically takes 2-5 min to generate a quality sample.



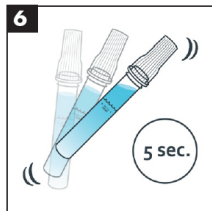
3 Fill the tube with saliva up to the black wavy line. Do NOT overfill.



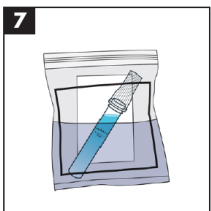
4 Remove the funnel and replace it with the fluid cap.



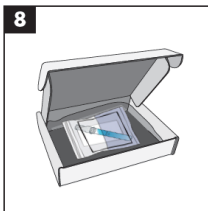
5 Screw the enclosed cap on tightly to release the solution.



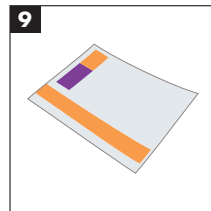
6 Shake the collection tube for at least 5 seconds.



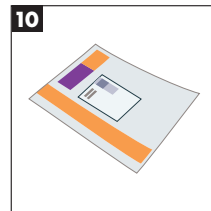
7 Place the collection tube and absorbent pad in the transport Biohazard Bag.



8 Put the Biohazard Bag into the crushproof box.



9 Place the crushproof box into the FedEx Express UN 3373 Pak and seal securely.



10 Attach the label to FedEx UN 3373 Pak.